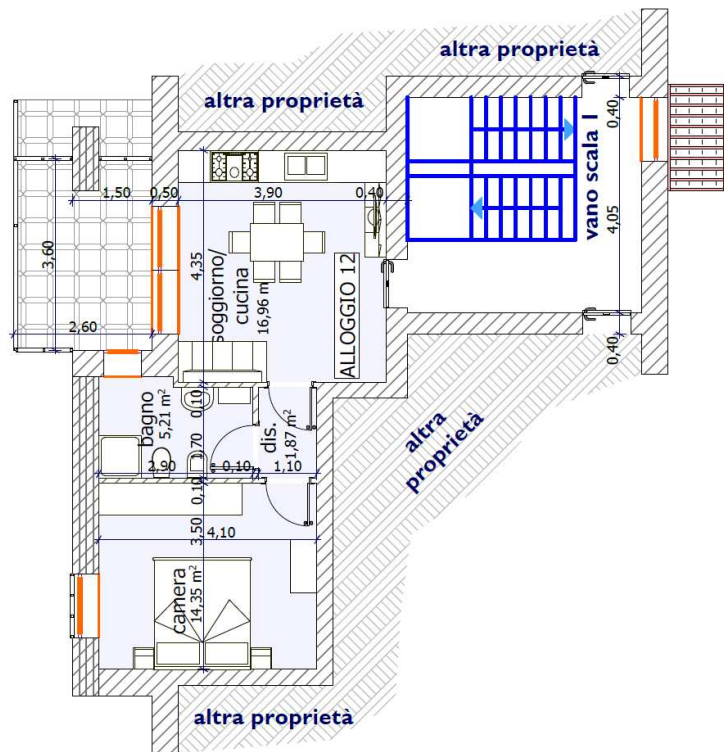
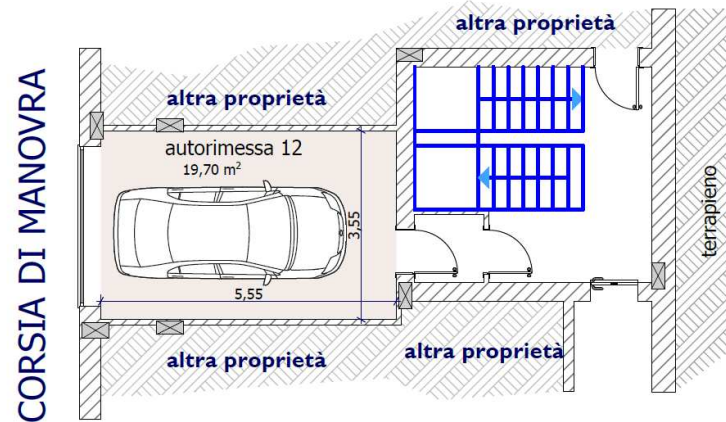


pianta piano primo - scala 1:100



pianta piano seminterrato



Superficie utile lorda:	
abitazione	mq. 49,45
balcone	mq. 9,35
Superficie commerciale:	
abitazione	100% mq.49,45
balcone	50% mq. 4,67
TOTALE	mq. 54,12
Autorimessa	mq. 19,70